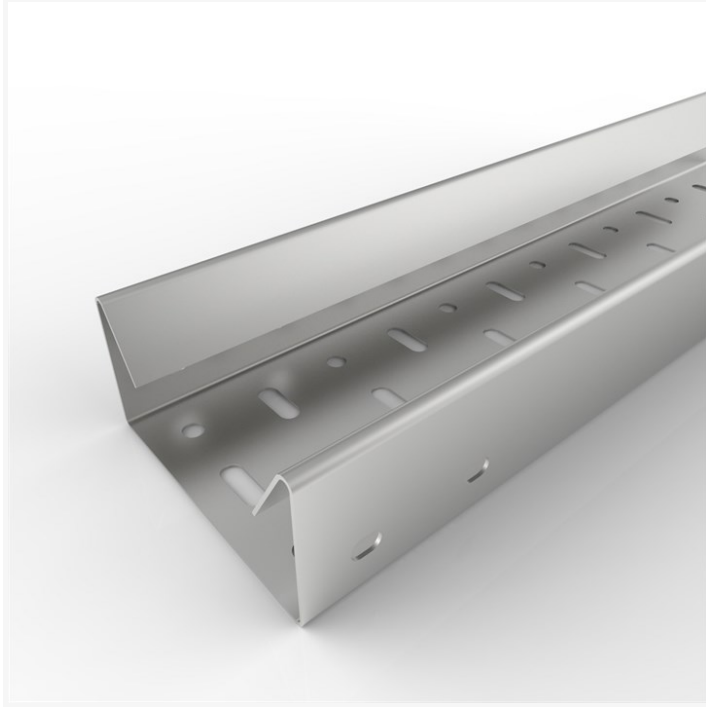


**HRF TRAY 300 304 | Heavy Duty Return Flange Cable Tray Length 3.0 m**



Electrix® Heavy Duty Return Flange Cable Tray Lengths, in 304 - V2A - 1.4301 stainless steel, have a 50 mm wall height and a return flange which provides added strength.

This 3.0 m length is 300 mm wide and is supplied with 1 x pair of straight couplings, nuts & screws (Part No. HRF CO).

1 x free fish-plate with the necessary nuts & screws is supplied (Part No. M/HRF FP 300) to provide additional strength for joints.

Optional lids are available for this range.





**SPECIFICATIONS**

Material Information	
Material Type	Stainless Steel
Material Grade	304 - V2A - 1.4301
Material Finish	Dull (2B)
Surface Finish (µm Ra)	< 0.5
Material Thickness (mm)	1.2
Dimensions	
Width (mm)	300
Wall Height (mm)	50
Length (m)	3.0
Custom Design	Custom Designs available on request. <ul style="list-style-type: none"> <li>• Custom lengths and sizes</li> <li>• Polished or Satin (Brushed) material</li> </ul> <a href="#">Click here to visit The Custom Shop.</a>
Cable Tray Information	
Standard	Heavy Duty
Wall Type	Return Flange
Wall Height (mm)	50

<b>Fish-plate Provided</b>	Yes
<b>For Use With</b>	
<b>For Tray Width (mm)</b>	300
<b>General Information</b>	
<b>Supplied With</b>	Fish-plate, Couplings, Nuts & Screws
<b>Ideally Suited For</b>	Food, Dairy, Brewing, Pharmaceutical, Soft Drinks, Architectural companies & many more
<b>Compatible With</b>	Heavy Duty Return Flange Cable Tray
<b>Alternative Material Finish / Grade</b>	Dull (2B) 316L - V4A - 1.4404
<b>Pack Quantity</b>	1
<b>Weight (kg)</b>	12.29
<b>Commodity Code</b>	73269098
<b>Disclaimer</b>	Images are representative of range and for illustration purposes only. Please check the full specifications for more information. All dimensions are subject to tolerances - please refer to the technical drawings.

## Stainless Steel Electrical Enclosures, Trunking, Conduit, Wire Basket Tray, Cable Tray, Supports, Strut, Brackets & Fasteners

### Head Office Contact Details:

 +44 (0) 1388 774455  
 +44 (0) 1388 777359  
 info@electrixinternational.com  
 www.electrixinternational.com





### USA/Canada Sales Office:

 1-888-774-4550 Toll-Free  
 or +1 917-717-7445  
 1-888-774-4990 Toll-Free  
 usa@electrixinternational.com  
 www.electrixinternational.com

### Nos Coordonnées:

 0800 913132 (N° Gratuit - France)  
 ou 0044 1388 774455  
 0044 1388 777359  
 info@electrix.fr  
 www.electrixinternational.com

### Setzen Sie sich mit uns in Verbindung:

 0800 1830118 (Deutschland)  
 oder 0044 1388 774455  
 0044 1388 777359  
 info@kabelverlegungssysteme.com  
 www.electrixinternational.com

**Registered Office: Electrix International Ltd, Dovecot Hill, South Church Enterprise Park, Bishop Auckland, Co. Durham, DL14 6XP, ENGLAND**  
 Electrix International Ltd is a UK registered company with company number 1570249 - VAT No. GB353998012



Certificate Registration No. 438273 QM15  
 Electrix International Ltd  
 ISO 9001 : 2015